



Interface Your Life of Technology

Website : <http://www.ece.com.tw>



INDEX

About ECE

Applications

Financial Review



百容基本介紹 Company Introduction

客戶信賴的長期策略夥伴

ECE is a long-term partner that you can rely on.

在百容，我們致力於和客戶建立密切的合作關係，協助客戶達成並繼續其領先地位，我們獲得成功的方式，便是著重於產品創新，製程整合及設備研發。因此，百容不只是個零件製造商，更是客戶所尋找的長期策略夥伴。

At ECE, we are always endeavoring in building up close cooperation relationships with our customers and in assisting them in maintaining their leading positions. The ways we achieve success are relying on product creativities, process integration and facilities development.

Therefore, ECE is not just an electronic component manufacturer, but also a long-term strategic partner for our customers.

百容基本介紹 Company Introduction

經營理念

Our operation faith is “Business Sustainability and Humanistic care”.



Our core values

01. Creativities in all aspects to maintain high energy and good spirits within our company.

02. Quality is an expression of characters and a base of customer trust

03. Management through process approach to achieve stable performance

04. Creating an environment of objective, fairness and positive-thinking

05. Ensuring operation achievements that can satisfy our stockholders, customers, staff, suppliers, and society.



ECE
Core values

COMPANY OVERVIEW

Organization of ECE Group



Electromechanical Components



Switches



Relays



Connectors



Terminal Blocks



Resettable Fuse



Chip Inductor & Bead

產業應用總覽 Applications



電腦系統 Computer System

- 平板 & 筆記型電腦 / Tablet & Notebook
- 工作站 & 伺服器 / Workstation & Server



電腦系週邊 Computer Peripherals

- 硬碟及磁碟陣列儲存器 /
Hard Disk & RAID (Redundant Arrays of Inexpensive Disks)
- 多功能事務機 / Multi-function Printer



網路及通訊 Network & Communication

- 網通產品&設備(通訊機站) / Network Products & Equipment
- 光纖通訊及RFID / Fiber-optical Communication & RFID

產業應用總覽 Applications



工業控制及儀器設備

Industrial Control & Instrument Equipments

- 工業電腦(人機介面)&POS系統 / Industrial PC & POS System
- 可程式控制器PLC/工具機控制 / PLC & Machine Tool Control
- 數位馬達伺服器 / Digital Motor Servers
- 檢測儀器&醫療設備 / Testing Instruments & Medical Equipments



安全監控系統

Security System

- 攝影監視器CCD/網路監視器IP / CCD Camera & IP Camera
- 紅外線感應器(PIR)及門禁管制系統 / PIR & Access Control System
- 火災警報及防盜系統 / Fire Alarm & Burglary Alarm System
- 安控主機及DVR / Security Control Host & DVR



消費電子及家電相關

Consumer Electronics & Household Appliance

- 冷氣(中央空調)&白色家電 / Air Conditioning & White Goods
- 音響廣播系統 / Audio Broadcasting System
- 電視遊樂機台 / Video Game

產業應用總覽 Applications



汽車電子相關

Automotive Electronics

- 行車紀錄器&衛星導航 / Driving Recorder & Navigation
- 汽車週邊產品及車庫門遙控器 / Automotive Peripherals & Remote Controller



光電產業

Optoelectronics Industry

- DVD播放器及LCD TV / DVD Player & LCD TV
- LED及節能燈控 / LED & Energy-saving Controller



電源能源產業

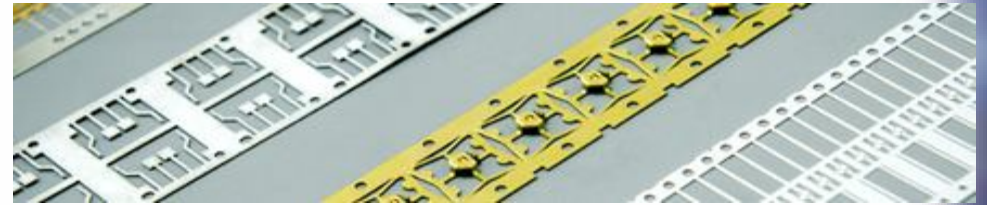
Power Energy Industry

- 不斷電供電系統UPS / UPS System
- 交換式電源供應器 / Switching Power Supply
- 工業用變頻器 / Inverter

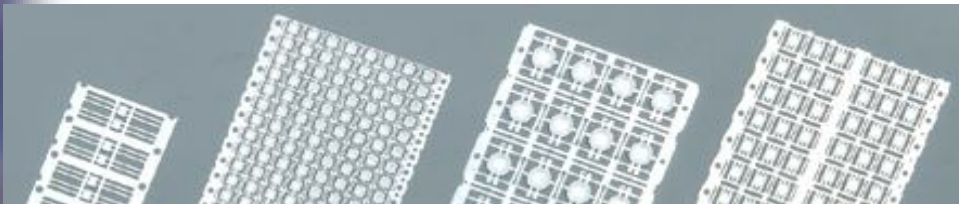
Stamping Products



Lead Frame of Semiconductors for Discrete Devices



Lead Frame of Semiconductors for Photoelectric Products



LED Products



Heat Spreader for BGA



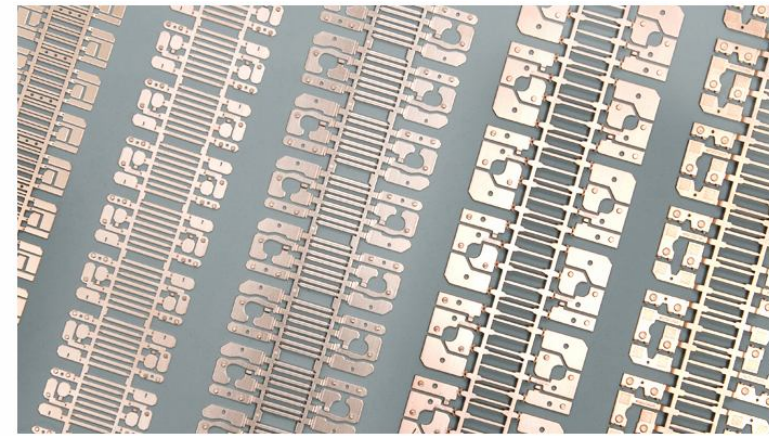
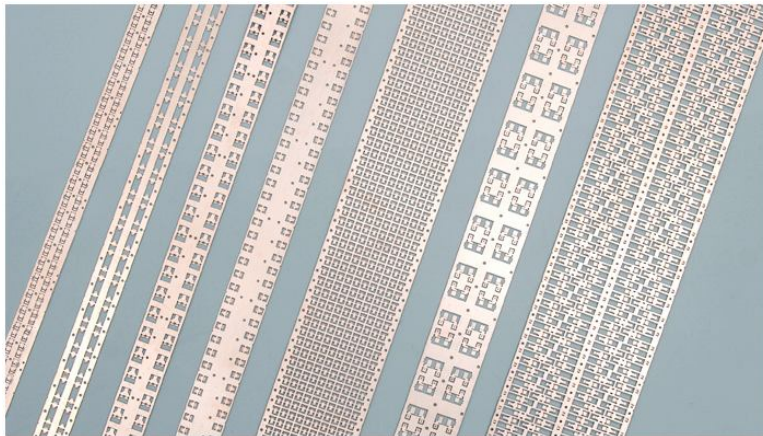
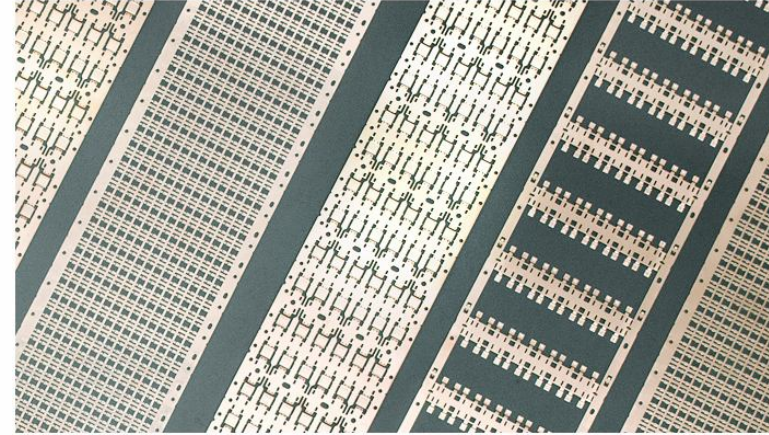
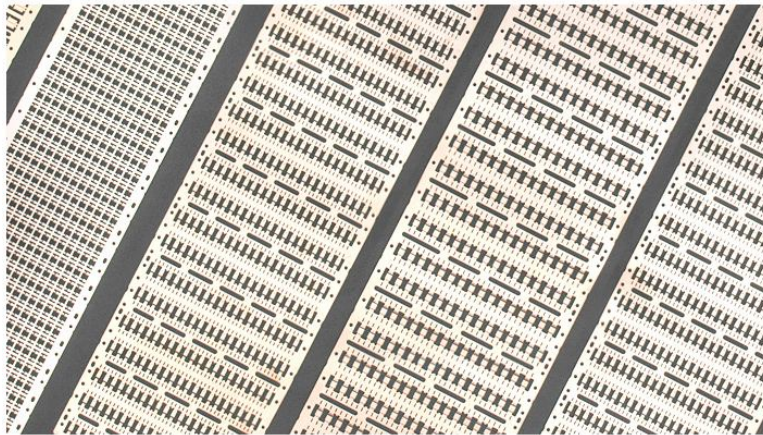
High precision electronic components

沖壓產品

Stamping Products

分離式元件

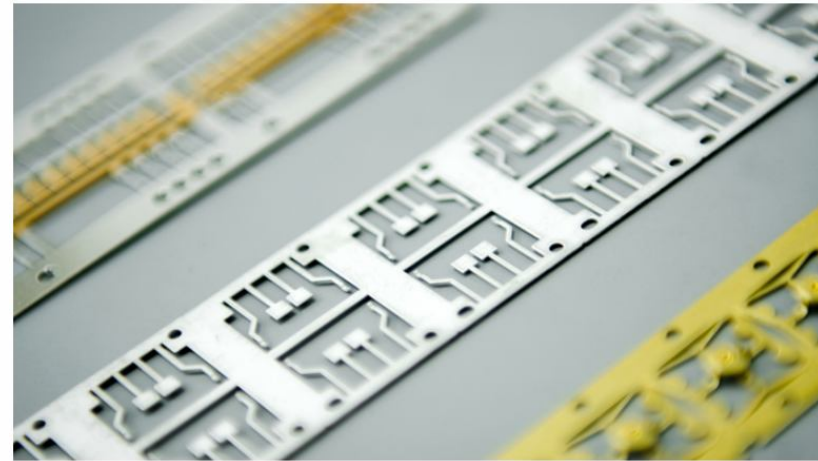
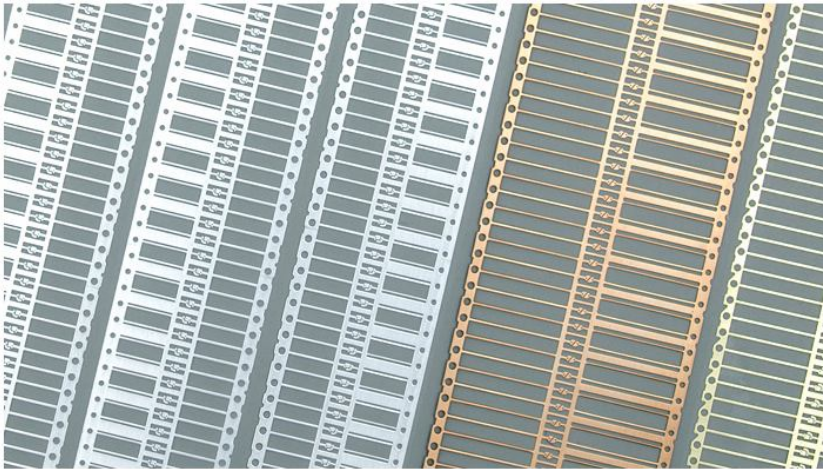
Lead Frame of Semiconductor for Discrete Devices



沖壓產品 Stamping Products

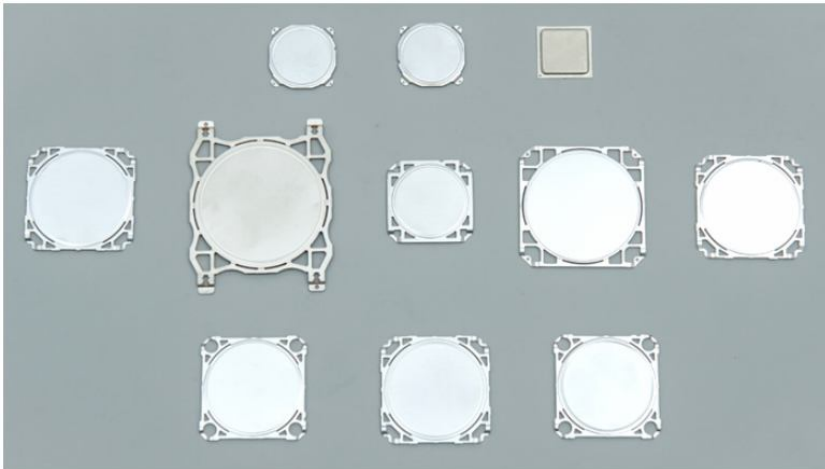
光學元件

Lead Frame of Semiconductor for Photoelectric Products



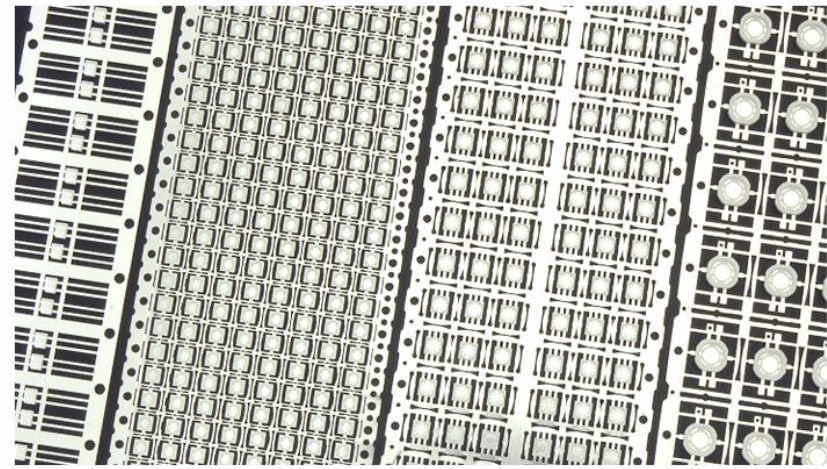
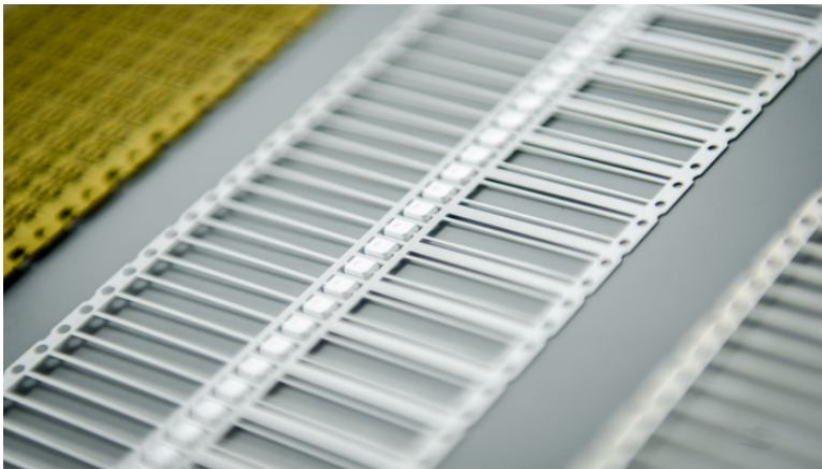
沖壓產品 Stamping Products

BGA用均溫片 Heat Spreader for BGA



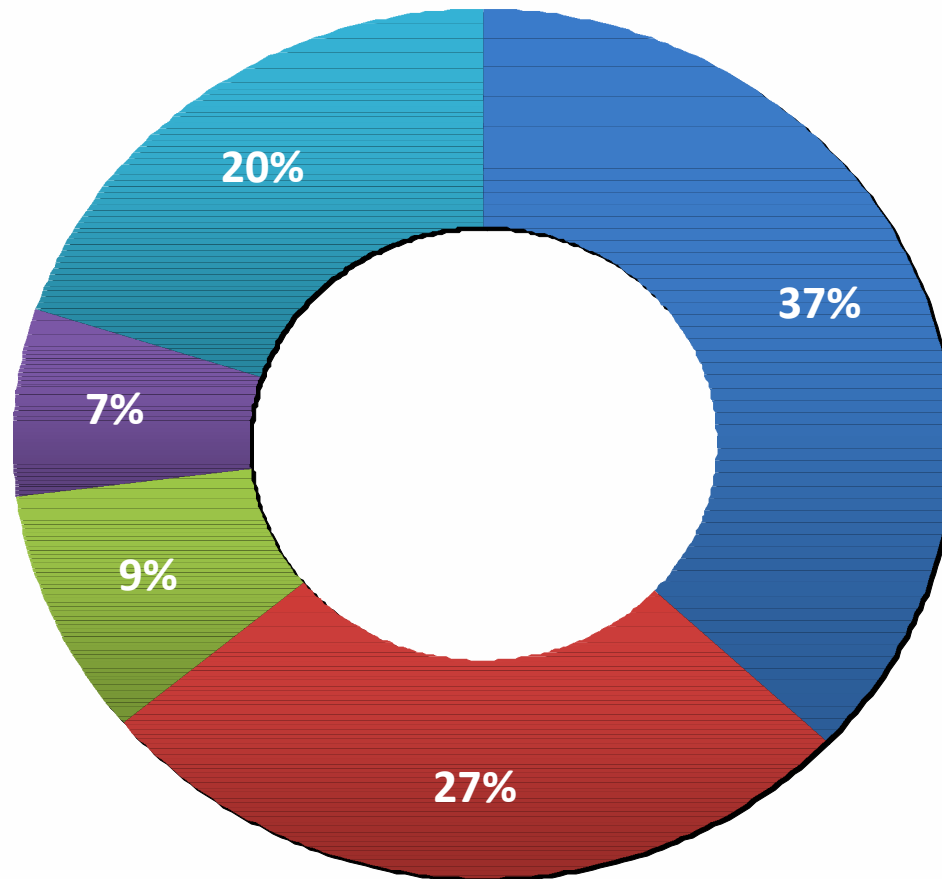
沖壓產品 Stamping Products

LED產品 LED Products

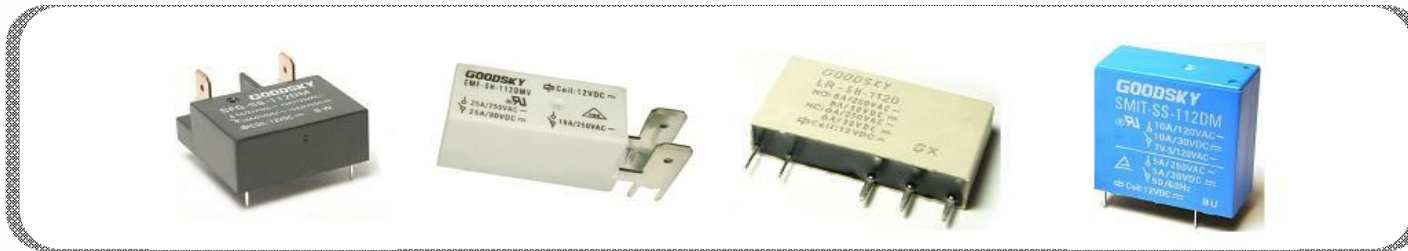


Revenue by Application- GOOD SKY

■ General Control ■ Home Appliances ■ Telecom ■ Automotive ■ Module



General Control –GOOD SKY



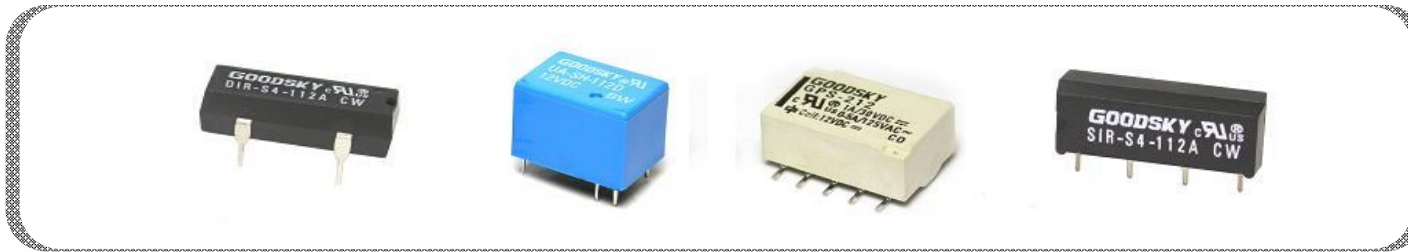
- ◆ Switching Power Supply
- ◆ UPS
- ◆ Lamp Control
- ◆ Monitor
- ◆ Programmable Logic Controller (PLC)
- ◆ Timer
- ◆ Counter
- ◆ Temperature Control Measurement
- ◆ Frequency Transformer
- ◆ Testing Instruments
- ◆ Vending Machine

Home Appliances –GOOD SKY



- ◆ Air Conditioner
- ◆ Refrigerator
- ◆ Washing Machine
- ◆ Remote Control
- ◆ Iron
- ◆ Microwave Oven
- ◆ Electrical Boiler
- ◆ Television
- ◆ Fan
- ◆ Audio
- ◆ Satellite Receiver

Telecom- GOOD SKY



- ◆ Server
- ◆ Answering Machine
- ◆ Telephone Exchange System
- ◆ Fax Machine
- ◆ Cordless Phone
- ◆ Modem

Automotive – GOOD SKY



- ◆ Lamp Control System
- ◆ Towing Bar
- ◆ ABS
- ◆ Alarm System
- ◆ Power Antenna
- ◆ Central Locking System
- ◆ Electrical Seat Adjustment
- ◆ Power Window
- ◆ Air Conditioning System
- ◆ Power Sunroof
- ◆ Wiper

Modules-GOOD SKY



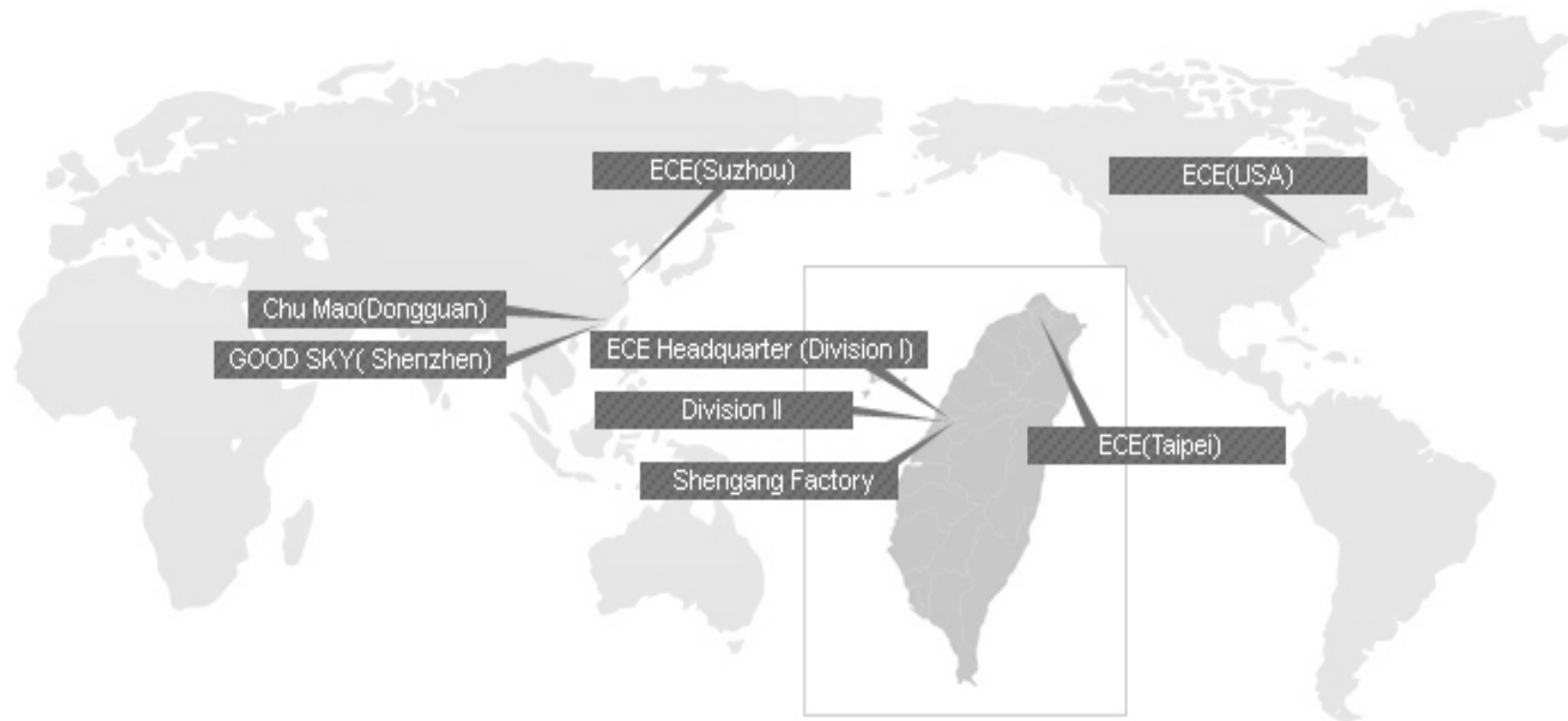
- ◆ Flasher Units
- ◆ Trailer Indicators
- ◆ Trailer Control Modules
- ◆ Trailer Check Control Modules
- ◆ Fog Light Relays
- ◆ Injector Emulators
- ◆ Gas-Petrol Switches
- ◆ Gas Meters
- ◆ Connectors

Accessories-GOOD SKY



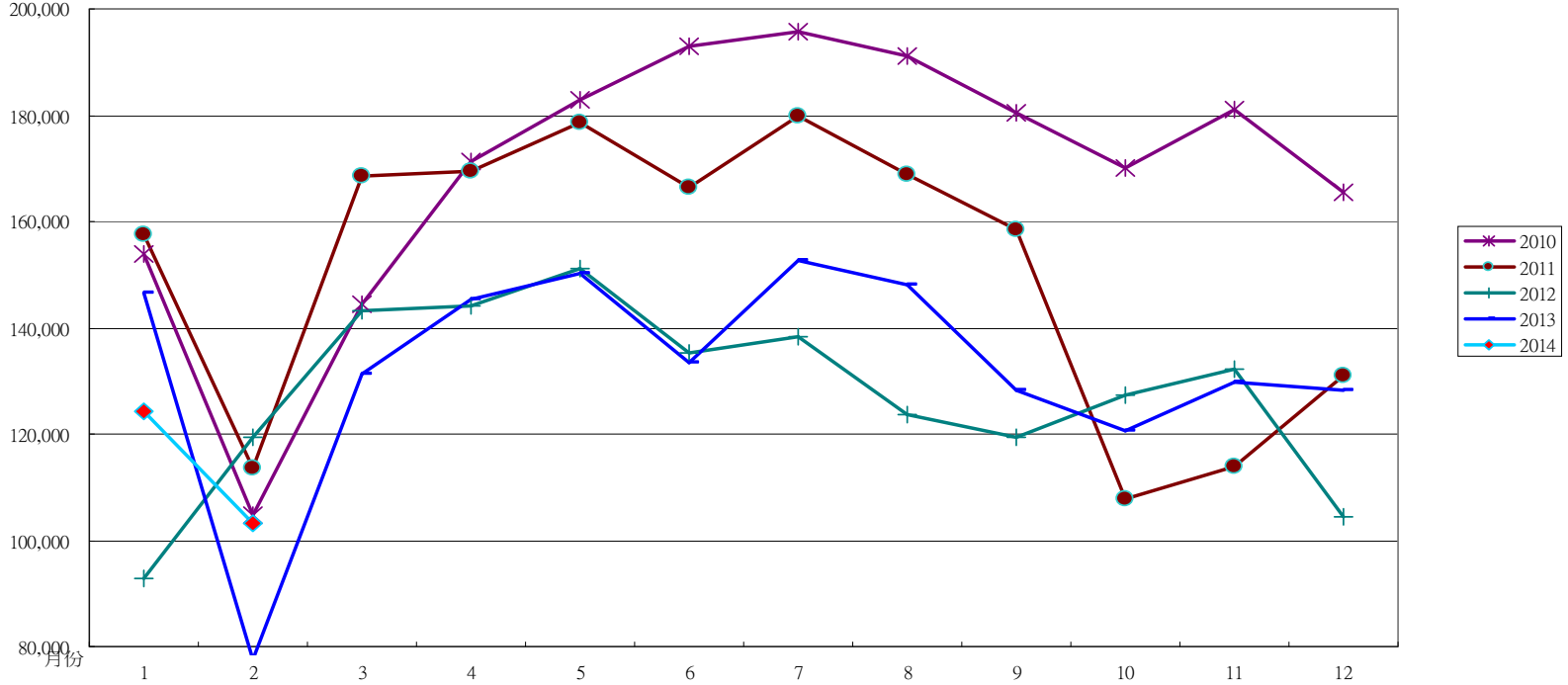
- ◆ Relay Sockets
- ◆ Din Rail Sockets
- ◆ LED Modules
- ◆ Contact Bridges
- ◆ Identification Boards
- ◆ Retaining Clips

全球化佈局 Global Strategies



Sales Amounts For 2010~2014

金額仟元



Income Statement-YoY : 12 Months

unit:NT thousands

Item	2014 Jan~DEC	%	2013 Jan~DEC	%	Change AMT	Change %
Net Operating Revenues	1,634,356	100.00	1,592,380	100.00	41,976	2.6
Cost of Good Sold	(1,231,539)	(75.35)	(1,259,400)	(79.09)	(27,861)	(2.2)
Gross Profit	402,817	24.65	332,979	20.91	69,838	21.0
Operrating Expenses	(290,548)	(17.78)	(280,255)	(17.60)	10,293	3.7
Operrating Income	112,269	6.87	52,724	3.31	59,545	112.9
Net Non-Operating Income and Expenses	84,366	5.16	100,320	6.30	(15,954)	(15.9)
Net Income before Tax	196,635	12.03	153,044	9.61	43,591	28.5
Income Tax Expense	(13,506)	(0.83)	(28,021)	(1.76)	(14,515)	(51.8)
Net Income	183,129	11.20	125,023	7.85	58,106	46.5
Net Income Attributable to the Stockholders of the Parent	181,319		122,282		59,037	48.3
EPS(NTD)	1.63		1.10			

Item	103. 1Q		103. 2Q		103. 3Q		103. 4Q	
	金額	%	金額	%	金額	%	金額	%
Net Operating Revenues	376,698	100	446,809	100	438,908	100	371,941	100
Gross Profit	78,999	(79)	114,294	(74)	118,169	(73)	91,355	(75)
Operating Income	12,003	21	40,196	26	43,694	27	16,376	25
Net Non-Operating Income and Expenses	28,949	(18)	14,011	(17)	18,003	(17)	23,403	(20)
Net Income before Tax	40,952	3	54,207	9	61,697	10	39,779	4
Income Tax Expense	(2,400)	8	(3,072)	3	(5,898)	4	(2,136)	6
Net Income	38,552	11	51,135	12	55,799	14	37,643	11
Attributable to the Stockholders	37,635		50,919		55,801		36,964	
EPS(NTD)	0.34		0.45		0.49		0.33	

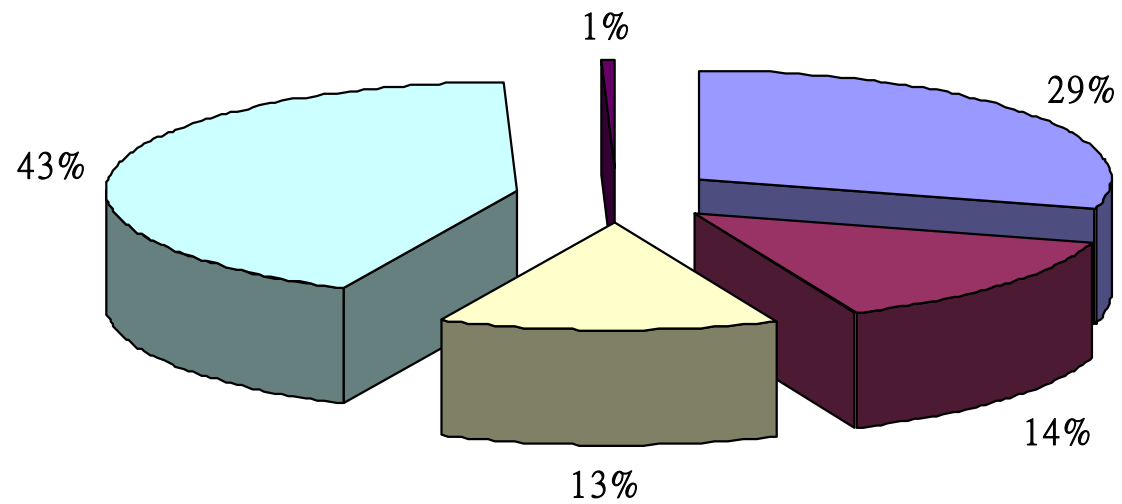


Balance Sheet Highlight-Dec. 31, 2014

unit:NT thousands

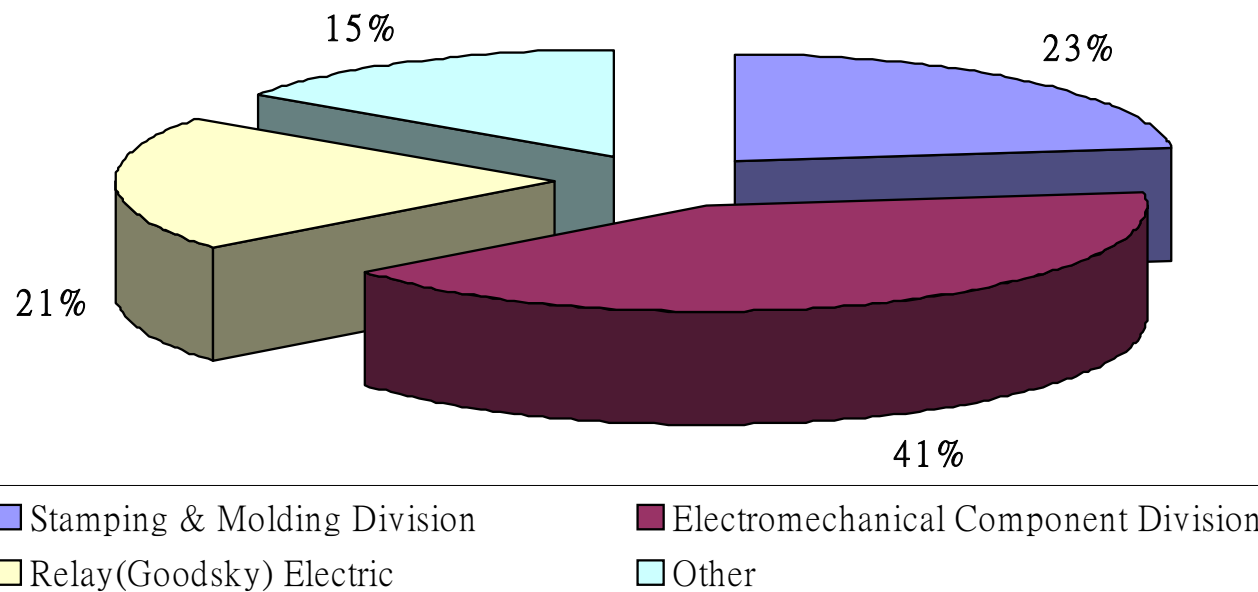
Cash and Cash Equivalents	631, 208
Funds and Investments	250, 169
Property, Plant and Equipmen	720, 347
Total Assets	2, 645, 808
Total Liabilities	325, 751
Stockholders' Equity	2, 320, 057

Sales Breakdown by Geography

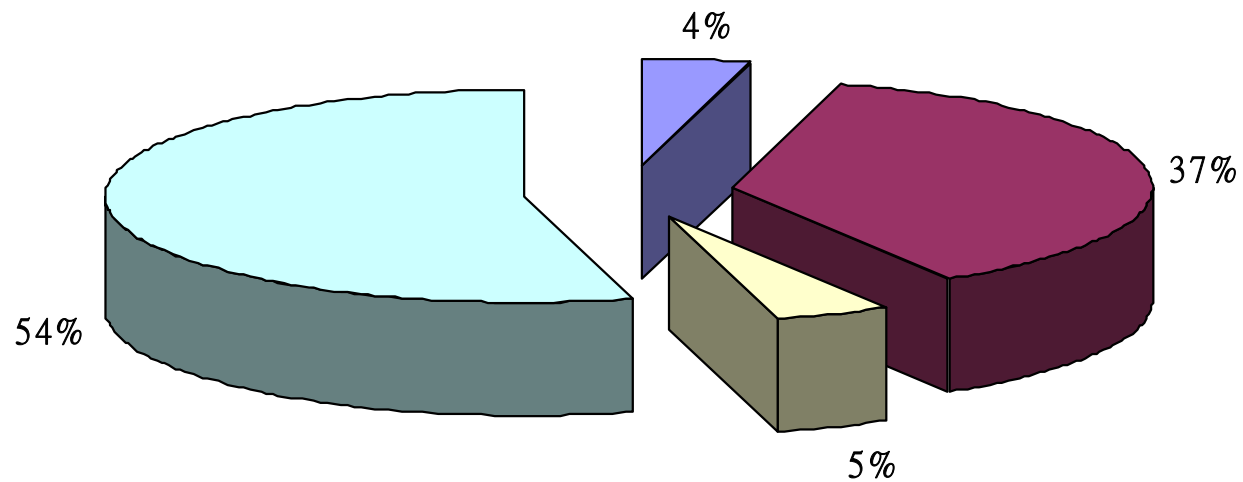


■ Taiwan ■ Europe ■ America ■ Asia ■ Other

Sales Breakdown by Operating Segments



Net Income Breakdown by Segments



Stamping & Molding Division

Electromechanical Component Division

Relay(Goodsky) Electric

Other

**Thank You for Your Attention!!
Any Questions?**

